



CHARACTERISTICS & FUNCTIONALITIES

LACTOSE
MONOHYDRATE

450
MESH

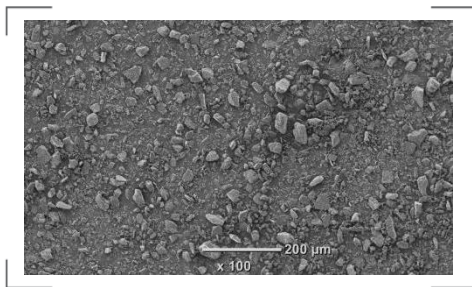


DESCRIPTION



ARMOR PHARMA™ lactose monohydrate 450M is a very finely milled powder of α -lactose monohydrate. This lactose is produced in ARMOR PHARMA™ dedicated & state-of-the-art facility in Loudéac (France). Manufactured under EXCIPACT™ GMP standards, it conforms to Ph.Eur, USP-NF and JP lactose monohydrate monographs.

SEM (Scanning Electron Microscopy)



KEY BENEFITS

- Compressibility
- Blending properties
- Storage stability

APPLICATIONS

- Wet granulation
- Dry granulation
- Blends/Premixes/Triturations
- Fermentation processes

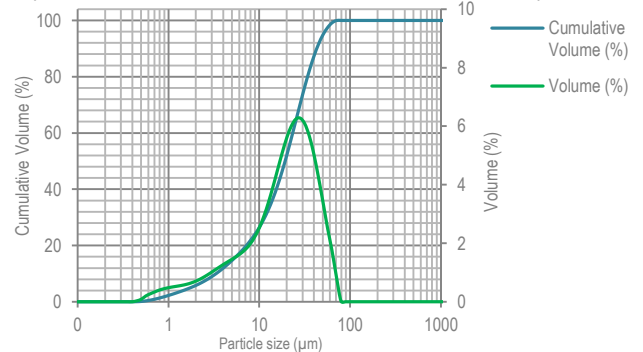


PARTICLE SIZE DISTRIBUTION (PSD)

PSD (Air jet sieve)	Specifications (%)
% < 45 μm	≥ 90
% < 63 μm	≥ 98
% < 150 μm	100

Due to the presence of very finely milled particles, this α -lactose monohydrate combines good compaction and blending properties.

PSD (Malvern Laser diffraction, indicative values)

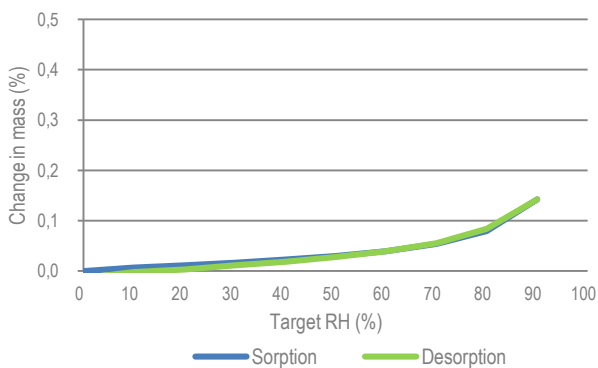


x_{10} : 3 μm x_{50} : 19 μm x_{90} : 43 μm



MOISTURE SORPTION

DVS (Dynamic Vapor Sorption)



The hygroscopicity of α -lactose monohydrate is very low which enables high stability both in storage as well as in formulations



FLOWABILITY

- POURED DENSITY: 0.46 g/mL
- TAPPED DENSITY: 0.66 g/mL
- CARR'S INDEX: 31 %
- HAUSNER RATIO: 1.45

How would you **like** your lactose?

The data contained in this document are for information purposes only and are non-contractual.
For more information, contact us: technical.support@armor-pharma.com