



CHARACTERISTICS & FUNCTIONALITIES

LACTOSE
MONOHYDRATE

200
MESH

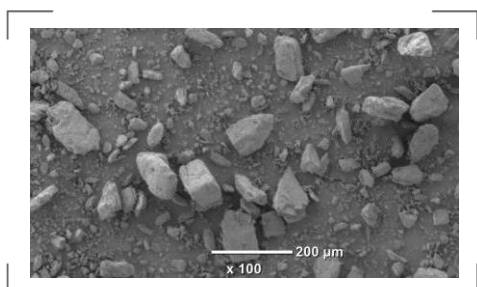


DESCRIPTION



ARMOR PHARMA™ lactose monohydrate 200M is a fine milled powder of α -lactose monohydrate. This lactose is produced in ARMOR PHARMA™ dedicated & state-of-the-art facility in Loudéac (France). Manufactured under EXCIPACT™ GMP standards, it conforms to Ph.Eur, USP-NF and JP lactose monohydrate monographs.

SEM (Scanning Electron Microscopy)



KEY BENEFITS

- Compressibility
- Blending properties
- Storage stability

APPLICATIONS

- Wet granulation
- Dry granulation
- Blends/Premixes/Triturations
- Fermentation processes

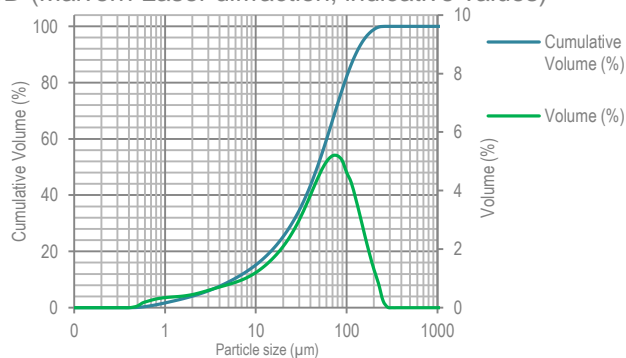


PARTICLE SIZE DISTRIBUTION (PSD)

PSD (Air jet sieve)	Specifications (%)
% < 45 μm	44 - 72
% < 100 μm	85 - 97
% < 150 μm	96 - 100
% < 250 μm	98 - 100

Due to the presence of fine milled particles, this α -lactose monohydrate combines good compaction and blending properties.

PSD (Malvern Laser diffraction, indicative values)

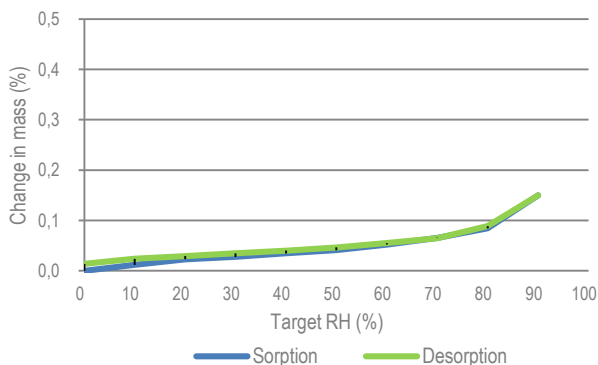


x_{10} : 6 μm x_{50} : 48 μm x_{90} : 125 μm



MOISTURE SORPTION

DVS (Dynamic Vapor Sorption)



The hygroscopicity of α -lactose monohydrate is very low which enables high stability both in storage as well as in formulations



FLOWABILITY

- POURED DENSITY: 0.57 g/mL
- TAPPED DENSITY: 0.83 g/mL
- CARR'S INDEX: 32 %
- HAUSNER RATIO: 1.47

How would you **like** your lactose?

The data contained in this document are for information purposes only and are non-contractual.

For more information, contact us: technical.support@armor-pharma.com



09/2018

armorpharma
delivering lactose solutions